



Clipsal Iconic™

Range Overview

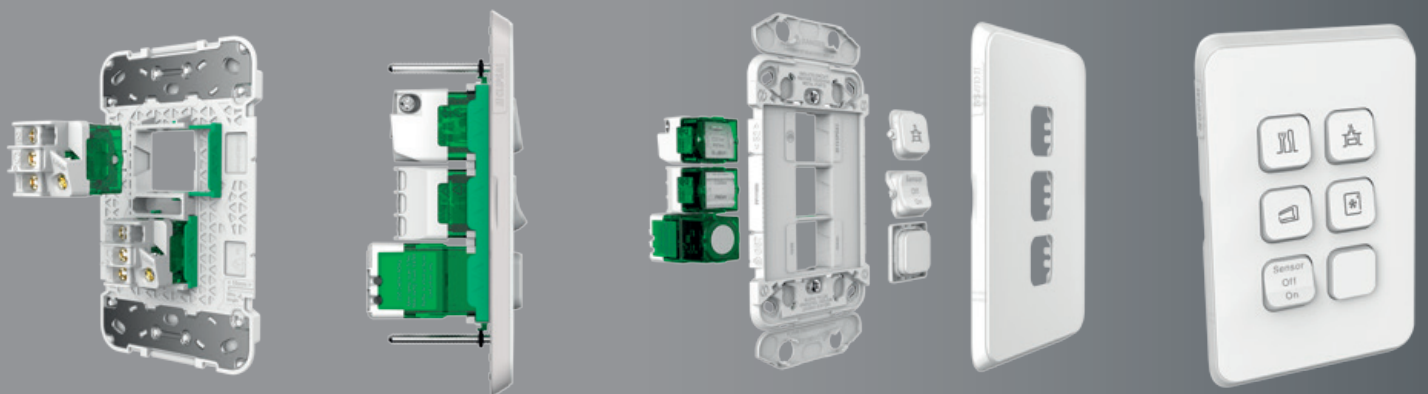
clipsal.com/iconic

Life Is On

CLIPSAL
by Schneider Electric

Clipsal Iconic™ Collection

Introducing our next generation platform
designed with electricians for electricians.





Clipsal Iconic™ is a modern electrical accessories range, based on a slim, sleek, clean design that is easy to customise and blends in with your environment.

It's loaded with clever features.

New game changing modular mechs and grids with changeable skins and dollies for unrivalled customisation now and in the future.

With new ControlLink, lights can be dimmed from multiple locations, plus you can link switches, dimmers, and time clocks together.

Patented locking bar allows simple mech reorientation and sturdy locking for a fast, easy and secure install, reducing the risk of mech pushbacks.

Clipsal Iconic's translucent edges allow the skins to pick-up background colours for a design that blends in with any wall colour.

Customisable and future-ready.

Innovative protective flaps help prevent screw access after installation, allowing skins to be changed safely at any time.

Clipsal Iconic switches are quick and easy to personalise with pictogram dollies that even your customers can change.

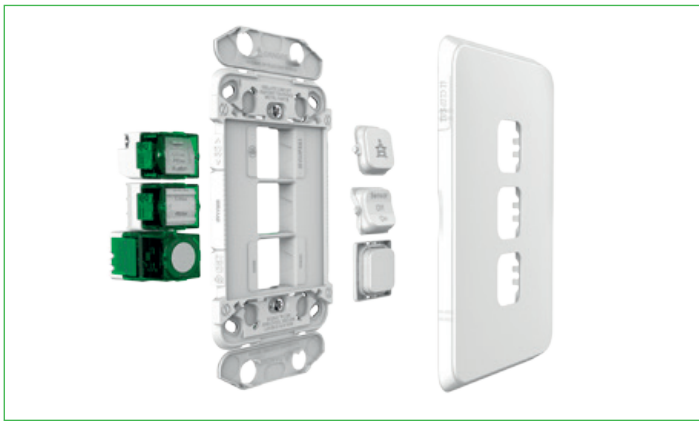
Bluetooth Low Energy delivers simple configuration for timers and time clocks via the Wiser Room App on your phone or tablet.

Clipsal Iconic is future-ready allowing for style and function updates in the coming years.

New Functionality



Night Walk sensor light



Modular design



3-socket USB charger with shelf

Clipsal Iconic™ features changeable skins, innovative features and enhanced connectivity.

In this all-new platform, we've thought of everything including new sockets, switches, dimmers and timers, USB chargers, new safety features, Bluetooth Low Energy connectivity and more. We've also designed Clipsal Iconic with features that greatly simplify installation, and developed new products for safer, smarter homes.

All-new 40 mechs

Clipsal Iconic switches and electronic accessories feature the all-new 40 mechs designed for optimum flexibility in up to 6-gang grids. The grids make changing from vertical to horizontal orientation simple, and patented locking bars reduce the risk of mech pushbacks.

New innovations

Clipsal Iconic introduces a new 3-gang USB charger with shelf. A new Night Walk skin, which replaces the standard double socket skin, features an integrated motion sensor that switches on when it detects movement. LEDs illuminate the way when someone gets up at night, without disturbing others.

Clever efficiency

Clipsal Iconic electronic accessories deliver clever efficiency to the home. New Bluetooth Low Energy connectivity and our own ControlLink technology offer simple configuration and multi-way control. The Wiser Room app lets you configure it all exactly to your customer's taste.

Enhanced connectivity

Clipsal Iconic includes a comprehensive range of options for all modern network connectivity requirements. With mechs for RJ45 networking, HDMI sockets and audio cable entry plates, you have everything you need for complete home networking.

Designed to Suit a Range of Décors



Optional skin colours



Easy skin changes



Optional pictograms identify functions

A range of skin colours

Clipsal Iconic™ offers unlimited flexibility to suit any interior design, with standard white skins, plus subtle colour variants that blend in with background wall colours.

Changeable skins

Clipsal Iconic grids and skins can be ordered separately. Innovative protective flaps help prevent screw access after installation, allowing skins to be changed safely at any time. That means, if a customer ever changes their mind, or would like skins of a new colour or style, they can change them by themselves any time they like.

Colours that blend in

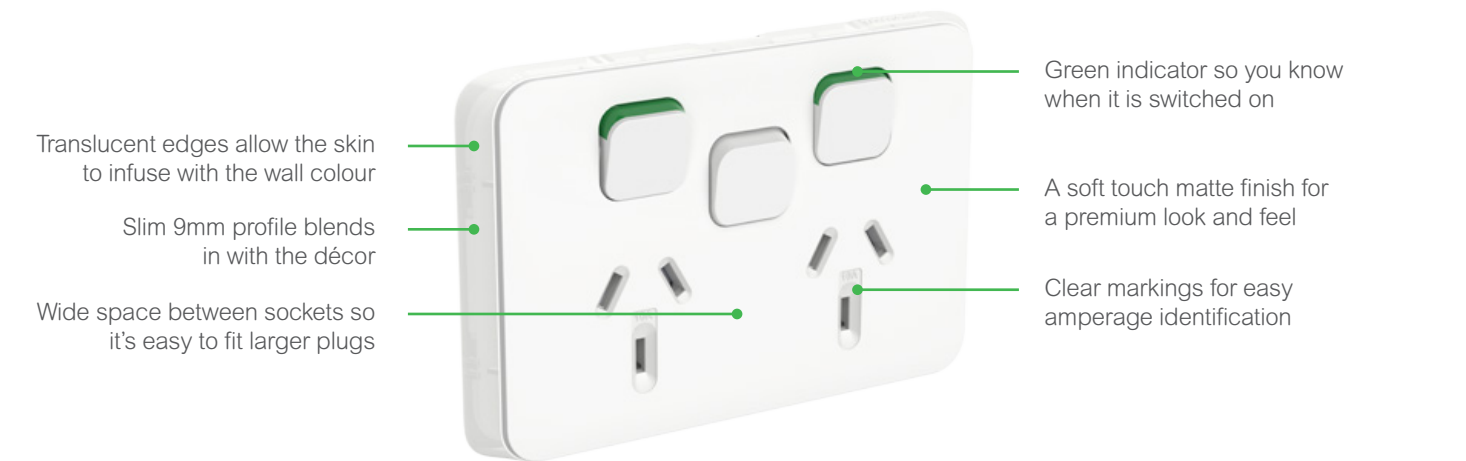
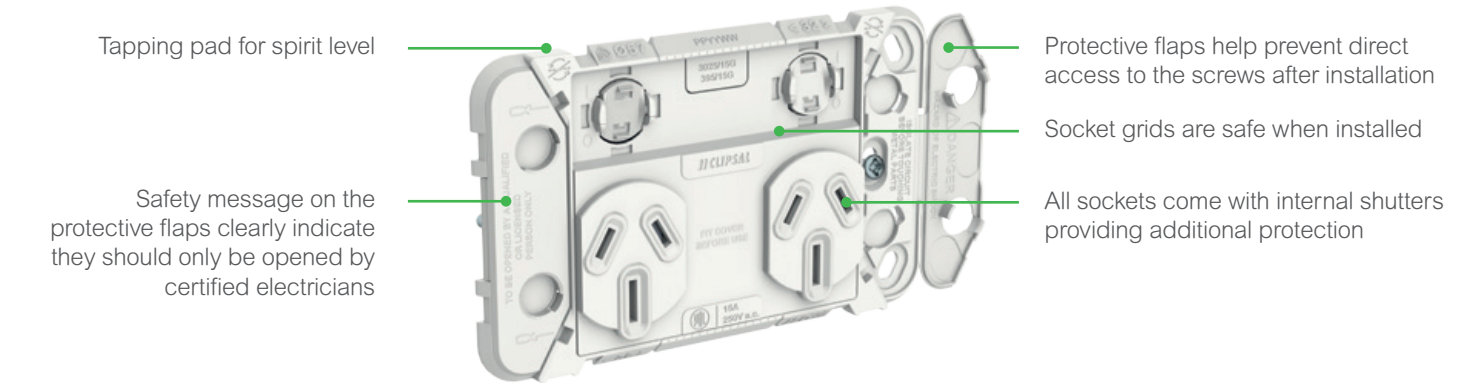
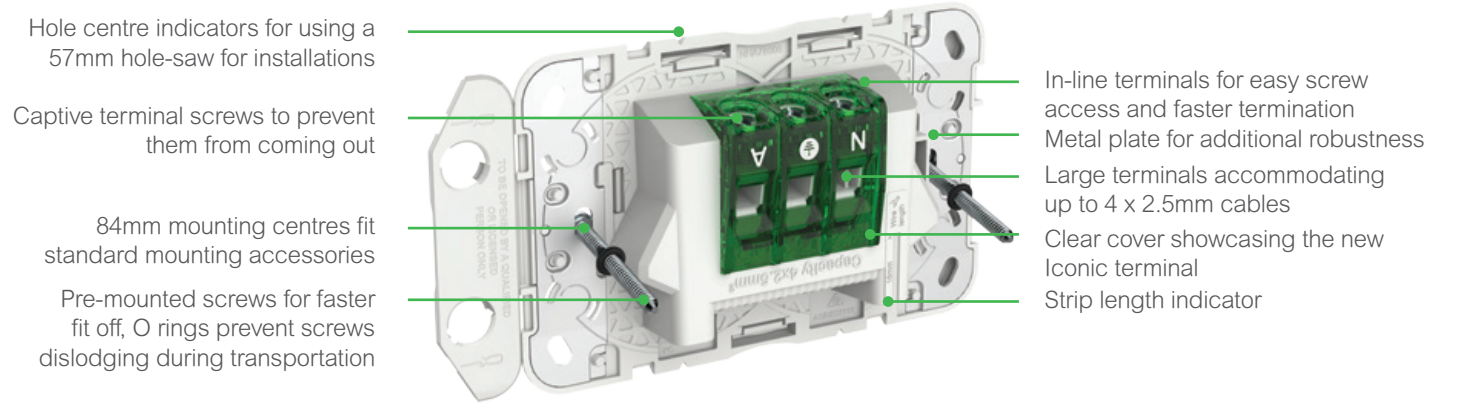
Clipsal Iconic offers three skin colour variants in addition to the standard Vivid White. Warm Grey is subtle and inviting, evoking relaxation with its sandy tones. Cool Grey is crisp and clean, enhancing cooler tones. Anthracite is deep and strong to blend in with richer, deeper wall colours.

Pictograms highlight functions

Clipsal Iconic has the option to personalise switches with icon dollies to make it easy to identify functions in multi-gang switches. You simply click out the plain dollies from the skins, and replace with pictogram dollies. There is a pictogram for a wide range of functions.

Sockets With a Difference

Clipsal Iconic™ features loads of new innovations like pre-mounted screws, protective flaps and in-line terminals.



Clever Switch Innovation

Clipsal Iconic™ grids feature new flaps, drill guides and 40 series mechs for easy installs and customisation.

Patented locking bar helps to reduce the risk of mech pushbacks, and makes it easier to change or upgrade mechanisms

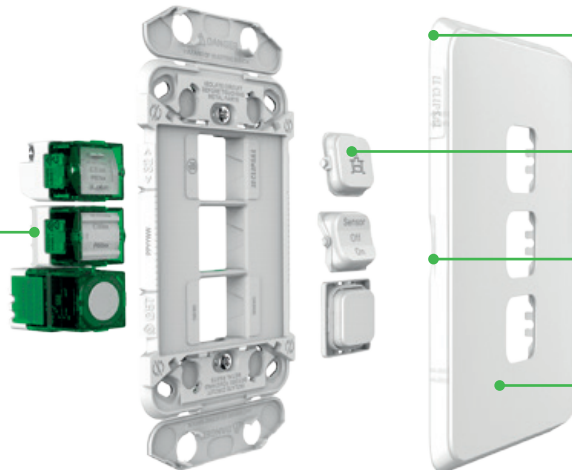
Metal plate for additional robustness



Pre-mounted screws for faster fit-off, O rings prevent screws dislodging during transportation

Protective flaps help prevent direct access to the screws after installation

All electrical accessories are now available in the new Iconic 40M format



Slim 7mm profile blends in with the décor

Pictogram dummies to personalise switches

Translucent edges allow the skin to infuse with the wall colour

A soft touch matte finish for premium look and feel

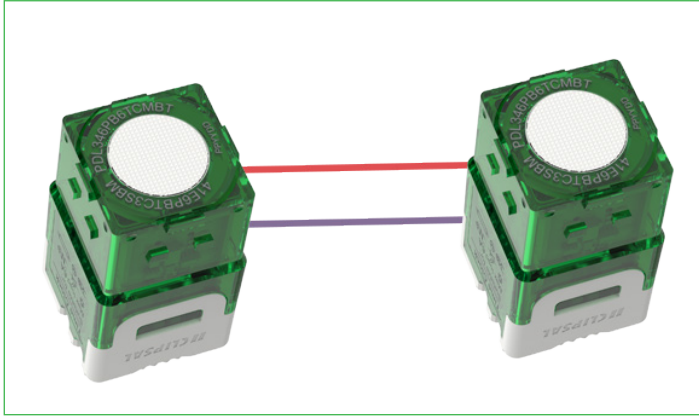
Screwdriver notch to aid removal from locking bar



Optional warm white LEDs can be easily wired and set as locator or indicator

New hybrid screws are suitable for square drive, Phillips and flathead screwdrivers

Electronic Accessories



Smart device app configuration and our own ControlLink connectivity



USB mech with built-in current management and rotating head



Electronic push button switches integrate with standard plates

Clipsal Iconic™ electronic accessories are designed for clever functionality.

Electronic accessories fit Clipsal Iconic switch grids. Secured in place with the mech locking bar, they can be easily changed to suit vertical or horizontal orientation. The range includes rotary dimmers, push button dimmers, electronic switches, timers, time clocks and USB chargers.

Rotary and push button dimmers

Clipsal Iconic electronic products include both push button and rotary dimmers. Push button dimmers offer multi-way dimming over standard wiring. The tactile push button turns the load on/off or dims up or down. Rotary dimmers adjust light from 1-100% with configurable minimum brightness settings. They come with built-in, re-settable, short circuit and over-temperature protection, and are optimised for compatibility assurance with Clipsal TPD series LEDs.

Time clocks

Clipsal Iconic time clocks are programmed via the Wiser Room app for 24 hour, 7 day scheduling. They're ideal for scheduling operating times for appliances like towel rails, garden lights, or hot water booster elements, and can be set to automatically track with seasonal sunrise and sunset changes. Iconic Time Clocks also function as push button timers providing extra functionality and ability to manually override schedules at any time.

Electronic switches

Clipsal Iconic electronic switches feature the same tactile 'click' feedback as the push button dimmers when being operated. One click turns the switch on, and one click turns it off. The 3-wire 6A model offers simple in-room smart device app control.

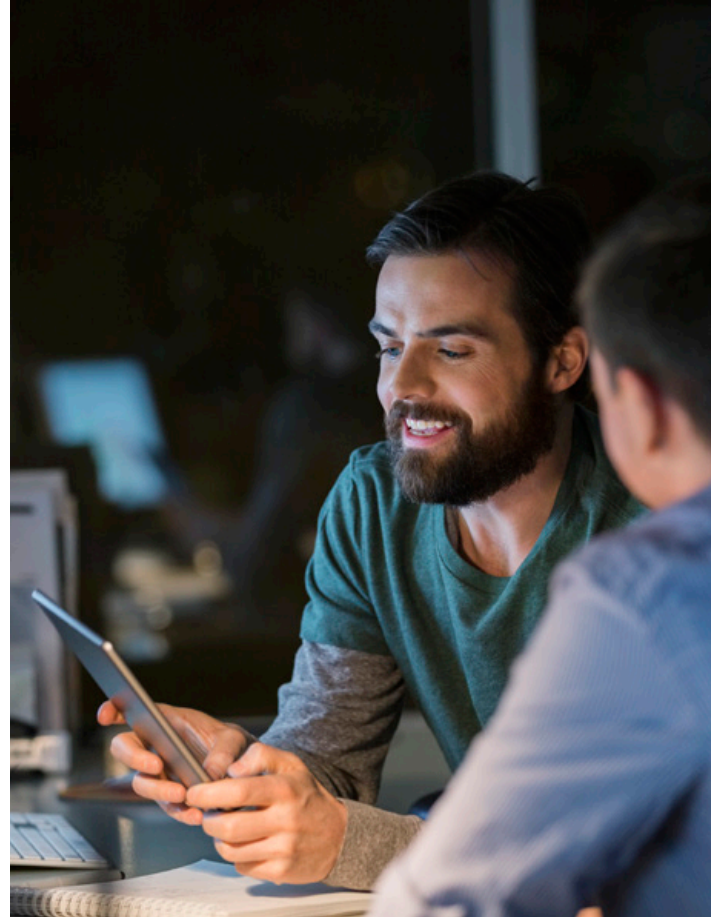
Timers

Clipsal Iconic timers are available in three models. The 350-watt timer can be configured to popular durations. The 3-wire 6 and 10 amp models can be programmed by the Wiser Room app for 1 second to 24 hour adjustable time delay and run-on capability. They're great energy savers for pantries, laundries and bathrooms.

USB chargers

Clipsal Iconic USB chargers have a patented rotatable head for easy reorientation. They also include a patented current management technology, which reduces the output current to prevent overheating while minimising charge times.

Electronic Accessories (cont'd)



Configure from the Wiser Room app

With ControlLink and Bluetooth Low Energy for simple connectivity.

Multi-way dimming and switching control has become easy with Clipsal Iconic™.

ControlLink connectivity

ControlLink allows for multi-way control of groups of lights, and for dimmers and time clocks to work together for enhanced functionality.

Wiser Room app

Clipsal Iconic three-wire electronic products can be configured via the Wiser Room app on most tablets or phones to perform programmed tasks like:

- Exhaust fan run-on after bathroom lights have been switched off
- Operate heated towel rails and/or lights on 24hr/7day schedules
- Automatic seasonal sunrise and sunset tracking
- It's also easy to reset everything to your original set point

Bluetooth Low Energy (BLE)

Clipsal Iconic three-wire mechs connect to the Wiser Room app via Bluetooth Low Energy. BLE saves energy, connecting only when required.

Connectivity without complexity

ControlLink and BLE together offer unprecedented flexibility. ControlLink uses standard wiring and BLE is available on most phones and tablets for connectivity.

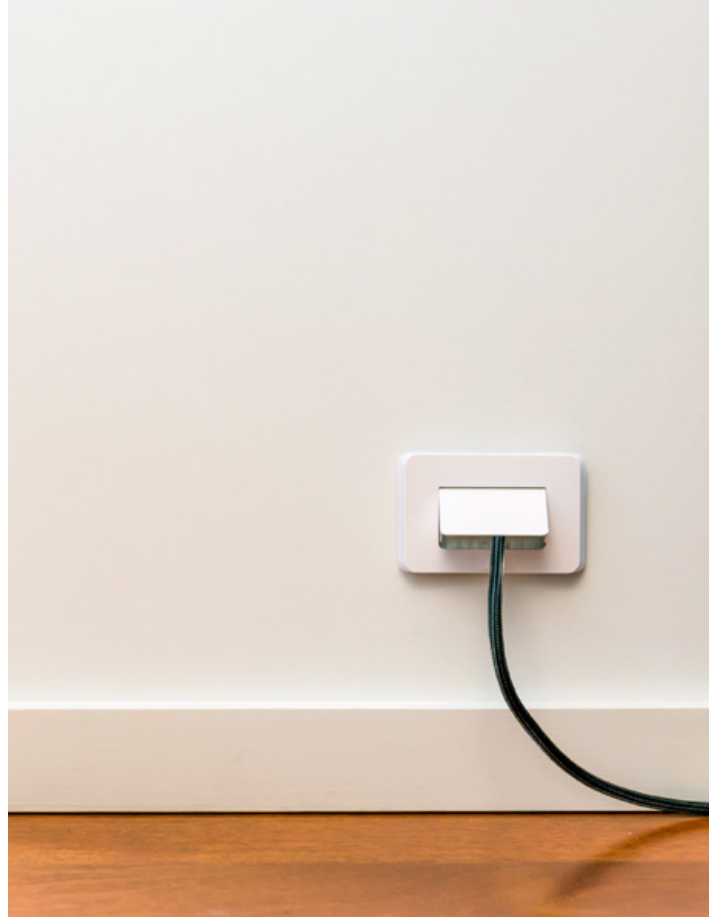
Network Connectivity



Simplified network connector combinations



Cable Entry Plate



Aesthetically appealing cable management

Clipsal Iconic™ includes a wide range of network connectivity products for a professional home network.

Clipsal Iconic has a broad offer for home network connectivity, allowing you to meet customer requirements for networking, audio and video installations easily.

Audio, video and networking

You can organise audio cables for sound systems via RCA connector mechs. TVs can be connected through F-type aerial connectors and HDMI cable mechs. RJ45 connectors can be used for home networking.

Flexibility of 40 mech grids

No two home networks are the same, which is where the new NCO 40 mech connectors make every set-up much simpler. You can use combinations of mechs in up to 6-gang grids, ensuring that a broad range of end user requirements are available in the Iconic range.

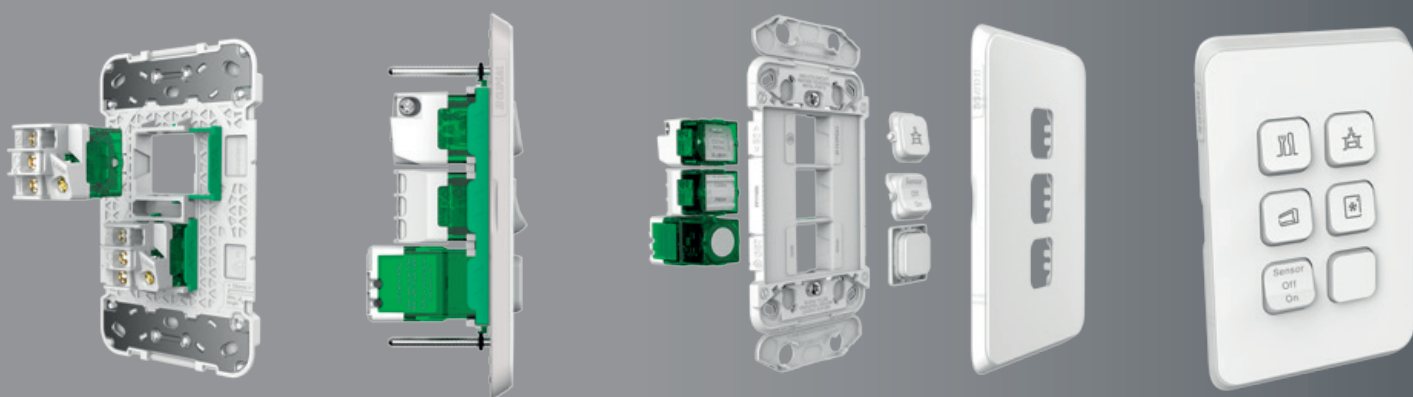
Actassi networking

Our range includes a wide range of functions from standard Cat5e, to Cat6, and premium performing Cat6A copper LAN solutions. Cat5e is ideal as a start for most home networking solutions, while Cat6 provides peace of mind with more reliable performance and bandwidth. Cat6A is our high-end solution for large and demanding applications.

40 Mech Adaptors

40 Mech adaptors allow for other branded RJ45 connectors to be installed into Clipsal Iconic grids should it be required.

Product References



Sockets, Switches and Mechs

Clipsal Iconic™ offers one to six-gang metal reinforced grids with patented mech locking bars for multiple combinations of 40 mech products.

Switches

Clipsal Iconic feature grids with innovative protective flaps, which help prevent screw access after installation, allowing skins to be changed safely at any time.

Architrave Switches



3041AL-VW
Architrave Switch, 1 Gang,
250VAC, 10AX, LED
3041AC*
Architrave Switch Skin,
1 Gang



3042AL-VW
Architrave Switch, 2 Gang,
250VAC, 10AX, LED
3042AC*
Architrave Switch Skin,
2 Gang

Switch Plates



3041VA-VW
Switch, Vertical, 1 Gang,
250VAC, 10AX
3041VAL-VW
Switch, Vertical, 1 Gang,
250VAC, 10AX, LED



3042VA-VW
Switch, Vertical, 2 Gang,
250VAC, 10AX
3042VAL-VW
Switch, Vertical, 2 Gang,
250VAC, 10AX, LED



3043VA-VW
Switch, Vertical, 3 Gang,
250VAC, 10AX



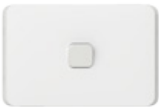
3044VA-VW
Switch, Vertical, 4 Gang,
250VAC, 10AX



3045VA-VW
Switch, Vertical, 5 Gang,
250VAC, 10AX



3046VA-VW
Switch, Vertical, 6 Gang,
250VAC, 10AX



3041HA-VW
Switch, Horizontal, 1 Gang,
250VAC, 10AX
3041HAL-VW
Switch, Horizontal, 1 Gang,
250VAC, 10AX, LED



3042HA-VW
Switch, Horizontal, 2 Gang,
250VAC, 10AX
3042HAL-VW
Switch, Horizontal, 2 Gang,
250VAC, 10AX, LED



3043HA-VW
Switch, Horizontal, 3 Gang,
250VAC, 10AX



3044HA-VW
Switch, Horizontal, 4 Gang,
250VAC, 10AX



3045HA-VW
Switch, Horizontal, 5 Gang,
250VAC, 10AX



3046HA-VW
Switch, Horizontal, 6 Gang,
250VAC, 10AX



3040-VW
Blank Plate,
Vertical/Horizontal

Sockets, Switches and Mechs (cont'd)

Fan Controller



3041VF3CSF-VW
Fan Speed Controller, 3
Speed, 250VAC, 75VA



40CSFM
Fan Speed Controller
Mechanism, 3 Speed,
250VAC, 75VA



3041/45-VW
Cooker Switch, Single Pole
250VAC, 45A



3041D45-VW
Cooker Switch, Double Pole,
250VAC, 45A

IP Rated Switches



3041V44-VW
Switch, IP44 Rated,
1 Gang, 250VAC, 10AX



3042V44-VW
Switch, IP44 Rated,
2 Gang, 250VAC, 10AX



3043V44-VW
Switch, IP44 Rated,
3 Gang, 250VAC, 10AX



3044V44-VW
Switch, IP44 Rated,
4 Gang, 250VAC, 10AX

Switch Grids

Clipsal Iconic™ grids are only suitable for 40 series mechanisms.



3040G
Blank Grid,
Vertical/Horizontal



3041G
Switch Grid,
Vertical/Horizontal,
1 Gang



3042G
Switch Grid,
Vertical/Horizontal,
2 Gang



3043G
Switch Grid,
Vertical/Horizontal,
3 Gang



3044G
Switch Grid,
Vertical/Horizontal,
4 Gang



3045G
Switch Grid,
Vertical/Horizontal,
5 Gang



3046G
Switch Grid,
Vertical/Horizontal,
6 Gang

Skins – including colours



3040C*
Blank Skin,
Vertical/Horizontal



3041C*
Switch Skin,
Vertical/Horizontal,
1 Gang



3042C*
Switch Skin,
Vertical/Horizontal,
2 Gang



3043C*
Switch Skin,
Vertical/Horizontal,
2 Gang



3044C*
Switch Skin,
Vertical/Horizontal,
2 Gang



3045C*
Switch Skin,
Vertical/Horizontal,
5 Gang



3046C*
Switch Skin,
Vertical/Horizontal,
6 Gang



3041/45C*
Cooker Switch Skin,
marked Cooker

* Available in

- Vivid White (VW)
- Warm Grey (WY)
- Cool Grey (CY)
- Anthracite (AN)

Sockets, Switches and Mechs (cont'd)

Sockets

Clipsal Iconic™ GPO sockets feature grids with innovative protective flaps, which help prevent screw access after installation, allowing skins to be changed safely at any time.



3015-VW
Power Outlet, Single,
250VAC, 10A



3015/15-VW
Power Outlet, Single,
250VAC, 15A



3015/20-VW
Power Outlet, Single,
250VAC, 20A



3015XA-VW
Power Outlet, Single,
250VAC, 10A, extra switch



3015XUA-VW
Power Outlet, Single,
250VAC, 10A,
extra switch, less mech



3025-VW
Power Outlet, Twin,
250VAC, 10A



3025/15-VW
Power Outlet, Twin,
250VAC, 15A



3025XA-VW
Power Outlet, Twin, 250VAC,
10A, extra switch



3025XUA-VW
Power Outlet, Twin, 250VAC,
10A, extra switch, less mech



3015/4-VW
Power Outlet, Quad,
250VAC, 10A



3015/4XXUA-VW
Power Outlet, Quad,
250VAC, 10A,
2 x extra switches, less mechs



3015V-VW
Power Outlet, Single,
Vertical, 250VAC, 10A



3025V-VW
Power Outlet, Twin,
Vertical, 250VAC, 10A



3025VXA-VW
Power Outlet, Twin, 250VAC,
10A, extra switch

RCD



3025RCD30-VW
Power Outlet, Twin,
30mA RCD Protected,
250VAC, 10A



3025USB2-VW
Power Outlet, Twin,
250VAC, 10A,
with Twin USB Charger



3043HSUSB - VW
3 gang USB charging
station with shelf,
3x2.1A (4.5A max)

USB Charger

Socket Grids



3015G
Power Outlet Grid, Single,
250VAC, 10A



3015/15G
Power Outlet Grid, Single,
250VAC, 15A



3015/20G
Power Outlet Grid, Single,
250VAC, 20A



3015XUAG
Power Outlet Grid, Single,
250VAC, 10A,
extra switch less mech



3025G
Power Outlet Grid, Twin,
250VAC, 10A



3025XAG
Power Outlet Grid, Twin,
250VAC, 10A, extra switch



3025/15G
Power Outlet Grid, Twin,
250VAC, 15A



3025RCD30G
Power Outlet Grid, Twin,
30mA RCD Protected,
250VAC, 10A



3015/4XXUAG
Power Outlet Grid, Quad,
250VAC, 10A,
2 x extra switches less mechs



3015VG
Power Outlet Grid, Single,
Vertical, 250VAC, 10A



3025VXUAG
Power Outlet Grid, Vertical,
250VAC, 10A,
extra switch less mech

Sockets, Switches and Mechs (cont'd)

Skins – including colours



3015C*
Power Outlet Skin,
Single, 250VAC, 10A



3015/15C*
Power Outlet Skin,
Single, 250VAC, 15A



3015/20C*
Power Outlet Skin,
Single, 250VAC, 20A



3015XC*
Power Outlet Skin, Single,
250VAC, 10A, extra switch



3025C*
Power Outlet Skin,
Twin 250VAC, 10A



3025/15C*
Power Outlet Skin,
Twin 250VAC, 15A



3025XC*
Power Outlet Skin,
Twin, 250VAC, 10A,
extra switch



3025RCD30C*
Power Outlet Skin, Twin,
30mA RCD Protected,
250VAC, 10A



3015/4C*
Power Outlet Skin,
Quad, 250VAC, 10A



3015/4XXC*
Power Outlet Skin,
Quad, 250VAC, 10A,
2 x extra switches



3015VC*
Power Outlet Skin,
Single, Vertical,
250VAC, 10A



3025VC*
Power Outlet Skin,
Twin, Vertical,
250VAC, 10A



3025VXC*
Power Outlet Skin,
Twin, Vertical, 250VAC,
10A, extra switch

* Available in

Vivid White (VW)

Warm Grey (WY)

Cool Grey (CY)

Anthracite (AN)



3043HS*
3 Gang Horizontal Shelf
suits 3043HSUSB Charger



3025NW*
Night walk sensor light,
plug-in skin, suits twin
socket outlet grid

Mechs



40M
Switch Mechanism,
1/2 way, 250VAC,
10AX



40ML
Switch Mechanism,
1/2 way, 250VAC,
10AX, LED



40USM
Switch Mechanism,
1/2 way, 250VAC,
20A/16AX



40USML
Switch Mechanism,
1/2 way, 250VAC,
20A/16AX, LED



40MBPRL-VW
Switch Mechanism,
Bell Press Return,
250VAC, 10A, LED



40M32-VW
Switch Mechanism,
1 way, 250VAC, 32A
40M32COOK-VW
Switch Mechanism, 1 way,
250VAC, 32A, marked Cooker



40MD20
Switch Mechanism,
Double Pole, 250VAC, 20AX
40MD20COOK-VW
Switch Mechanism,
Double Pole, 250VAC, 20AX,
marked Cooker



40MIL
Switch Mechanism,
Intermediate, 250VAC,
10AX, LED



40RSM3
Switch Mechanism, Rotary, 4
Position, 250VAC,
10A, OFF-1-2-3



40RSM2
Switch Mechanism, Rotary,
4 Position, 250VAC,
10A, OFF-1-OFF-2



49M-VW
Switch Mechanism,
3 Position, 250VAC, 10A



40MLEDW
LED Module, 250VAC,
Warm White

Sockets, Switches and Mechs (cont'd)

Dollies

Clipsal Iconic™ switches come standard with plain dollies, which you can customise with optional pictogram dollies.



40FR-VW
Dolly Rocker,
marked FAN



40LR-VW
Dolly Rocker,
marked LIGHT



40HR-VW
Dolly Rocker,
marked HEAT



40FRR-VW
Dolly Rocker,
marked FRIDGE



40SR-VW
Dolly Rocker,
marked SENSOR



40MR-VW
Dolly Rocker,
marked MICROWAVE



40AMR-VW
Dolly Rocker,
marked AUTO MANUAL



40ACR-VW
Dolly Rocker,
marked AIRCON



40ALR-VW
Dolly Rocker,
marked ALARM



40BD1R-VW
Dolly Rocker,
marked BED 1



40BD2R-VW
Dolly Rocker,
marked BED 2



40BD3R-VW
Dolly Rocker,
marked BED 3



40BD4R-VW
Dolly Rocker,
marked BED 4



40BDR-VW
Dolly Rocker,
marked BED



40KR-VW
Dolly Rocker,
marked KITCHEN



40DR-VW
Dolly Rocker,
marked DINING



40STR-VW
Dolly Rocker,
marked STUDY



40FAR-VW
Dolly Rocker,
marked FAMILY



40Z1R-VW
Dolly Rocker,
marked ZONE 1



40Z2R-VW
Dolly Rocker,
marked ZONE 2



40Z3R-VW
Dolly Rocker,
marked ZONE 3



40LOR-VW
Dolly Rocker,
marked LOUNGE



40AR-VW
Dolly Rocker,
marked BLANK



40R32-VW
Dolly Rocker,
marked 32A



49MLBL-VW
Dolly Toggle, marked
SON-AOM-UOD



40RSM3KB
Dolly Rotary, marked
OFF-1-2-3, 4 colours



40RSM2KB
Dolly Rotary, marked
OFF-1-OFF-2, 4 colours



49T-VW
Dolly Toggle, 3
Position, BLANK

Note: Not all pictogram dollies are compatible with every switch.

Accessories

Clipsal Iconic range suits existing mounting accessories with the addition of the new 4-gang socket wall bracket (3155H4) to suit the 3015/4 series.



3000PP/100
Paint Protector



3155H4
Quad Socket Mounting Bracket

Network Connectivity

The Clipsal Iconic™ network connectivity offer includes all common connector options for the modern networked home.

Audio Connectors

RCA sockets for stereo speaker cables.



40BC/2-TN
Banana Audio
Connectors RD + BK



40SPK/2-TN
RCA Audio
Sockets RD+BK

TV Sockets and Plates

F-series sockets and plates for television broadcast coaxial cables.



40FFPMS-TN
TV Socket PAL Front,
F-Type Rear



40PFM-TN
TV Socket F-Type Front,
F-Type Rear



3041VTV75F-VW TV
Socket PAL Front,
F-Type Rear, 1G Plate

HDMI Sockets

Ideal for organising HDMI communications cables.



40HDMIA-TN
HDMI Socket
Angled Rear



40HDMIS-TN
HDMI Socket
Straight Rear

Telephone Sockets

For organising telephone cables.



40RJ64SMT-TN
Cat 3 Telephone
Connector RJ12

Cable Entry Plates

Clipsal Iconic cable entry plates keep cable connections tidy.



3040CEP-VW
Cable Entry Plate

Clipsal 40 Mech Adaptors



40ADPKS-TN
Adaptor RJ Tyco
Krone Siemon, 10Pk



40ADPSY-TN
Adaptor RJ Systemax
AT&T, 10Pk

Actassi RJ45 Sockets

High Performing RJ45 Sockets for connecting your home Network



40RJ45SMA5-TN
Cat 5E Connector
RJ45 Unshielded



40RJ45SMA5SH-TN / PK
Cat 5E Connector RJ45,
Shuttered, Unshielded



40RJ45SMA6-TN
Cat 6 Connector
RJ45 Unshielded

Actassi RJ45 Sockets (cont'd)



40RJ45SMA6SH-TN
Cat 6 Connector RJ45
Shuttered, Unshielded



40RJ45SMA6A-TN
Cat 6A Connector RJ45
Unshielded



40RJ45SMA6AS-TN
Cat 6A Connector RJ45
Shuttered Unshielded



VDIB177AXU10TN
Cat 6A Connector RJ45
Unshielded DPM 10Pk



VDIB177AXB10TN
Cat 6A Connector RJ45
Shielded DPM 10 Pk

Electronic Accessories

Clipsal Iconic™ electronic accessories offer clever functionality to the home.

Push Button Dimmer

Offers multi-way push button switching and dimming.



41E300PBUD2SM-VW
Pushbutton Universal
Dimmer 300W 2-wire,
with ControlLink

Rotary Dimmer

Available in LED and universal models, offering adjustable minimum brightness to suit LED and many other loads.



42E350RLD2M-VW
Rotary LED Dimmer
350W, 2-wire



42E350RUD2M-VW
Rotary Universal Dimmer
350W, 2-wire

Time Clocks

Can be programmed with the Wisier Room app for 24hr/7day scheduling.



41E6PBTC3SBM-VW
Pushbutton Time Clock,
24/7 scheduler, 6AX,
3-wire with app config



41E10PBTC3SBM-VW
Pushbutton Time Clock, 24/7
scheduler, 10AX/15A, 3-wire
with app config

Timers

Can be programmed by the push button or via the Wisier Room app (3-wire models).



41E6PBT3SBM-VW
Pushbutton Timer 6AX,
3-wire, with app config



41E10PBT3SBM-VW
Pushbutton Timer
10AX/15A resistive,
3-wire with app config



41E350PBT2SM-VW
Pushbutton Timer 350W,
2-wire, with ControlLink

ControlLink Mech

Remote mech uses standard wiring to provide multi-way dimming and switching control for compatible ControlLink electronic mechanisms.



41EPBM-VW
ControlLink Remote Push
button momentary switch

Electronic Accessories (cont'd)

USB Chargers

Single and double USB charger mechs.



40E1USBM-VW
Single USB charging
mechanism 1.5A



40E2USBM-VW
Dual USB
charging mechanism,
2x2.1A (3.1A max)

Electronic Switch

Provide tactile feel push button electronic switching with App Control (3-wire model)



41E350PBES2SM-VW
Push button Electronic Switch
350W, 2-wire, with ControlLink



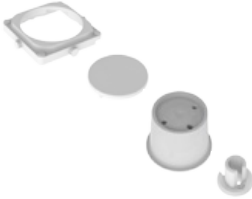
41E6PBES3SBM-VW
Push button Electronic Switch
6AX, 3 wire, with app control

Caps and Accessories

All accessories available in Clipsal Iconic™ optional colours*.



40APB*
Push Button parts pack
assembly, Blank



40EDIMKB*
Rotary Dimmer
Knob Parts Pack



40E1USBCAP*
Mechanism Cap to suit
single USB charger



40E2USBCAP*
Mechanism Cap to suit
Dual USB charger

* Available in

Vivid White (VW)

Warm Grey (WY)

Cool Grey (CY)

Anthracite (AN)



For more information about the Clipsal Iconic™ range, contact your local Clipsal and Schneider Electric Partner Business Representative, electrical wholesaler, or visit clipsal.com/iconic

Schneider Electric (Australia) Pty. Ltd.
33-37 Port Wakefield Road,
Gepps Cross, South Australia, 5085
PO Box 132, Enfield Plaza,
South Australia, 5085
www.schneider-electric.com.au

Consumer Support Enquiries
Phone: 1300 669 925
Website: clipsal.com/contactus

National Customer Care (trade only)
Phone: 1300 369 233
Email: plugin@clipsal.com.au

SEAU19810431

©2016 Schneider Electric. All Rights Reserved. Iconic and Clipsal Iconic are trademarks of Schneider Electric (Australia) PTY Limited.

This document has been printed on recycled paper.

clipsal.com/iconic

Life Is On

CLIPSAL
by Schneider Electric