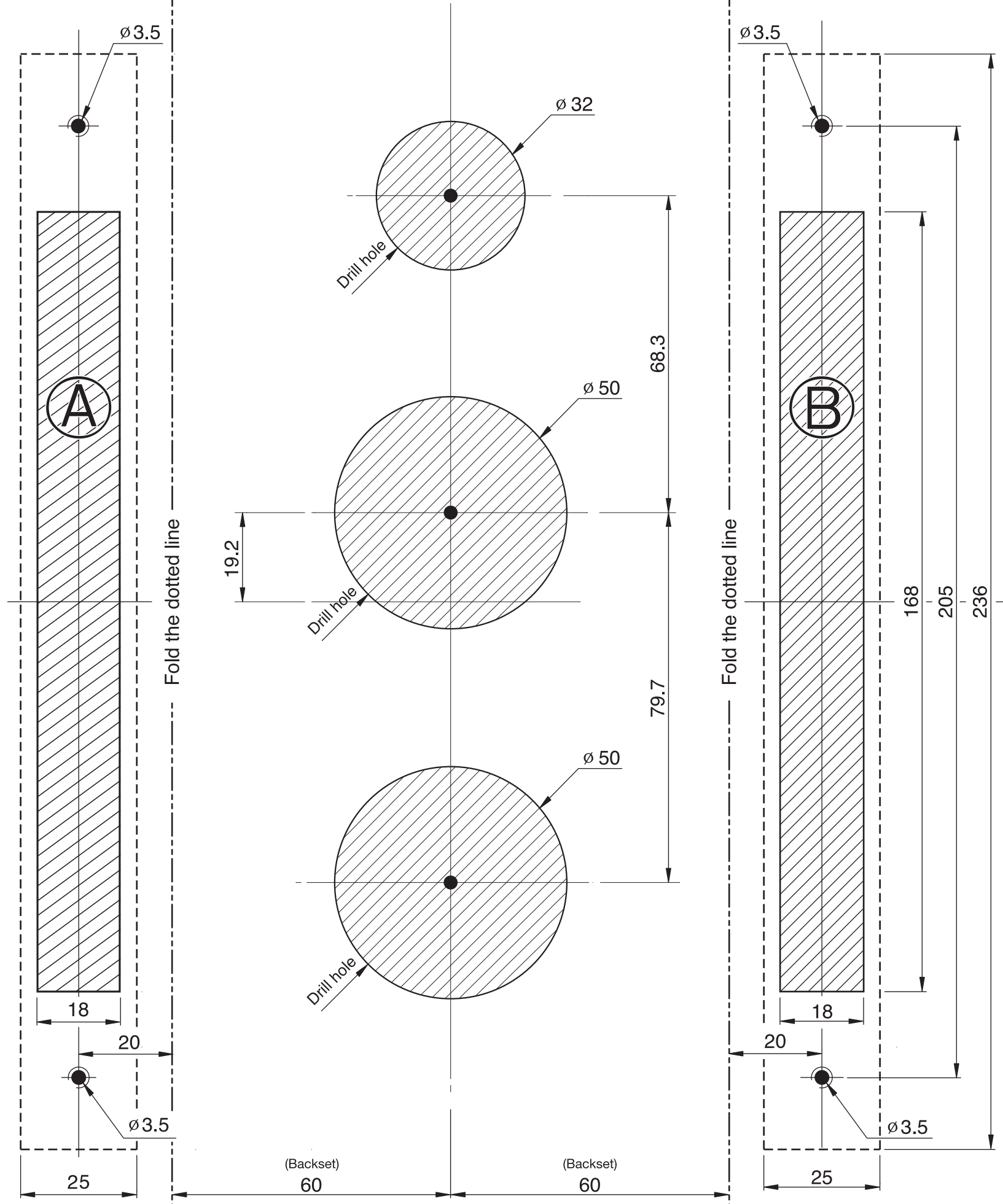
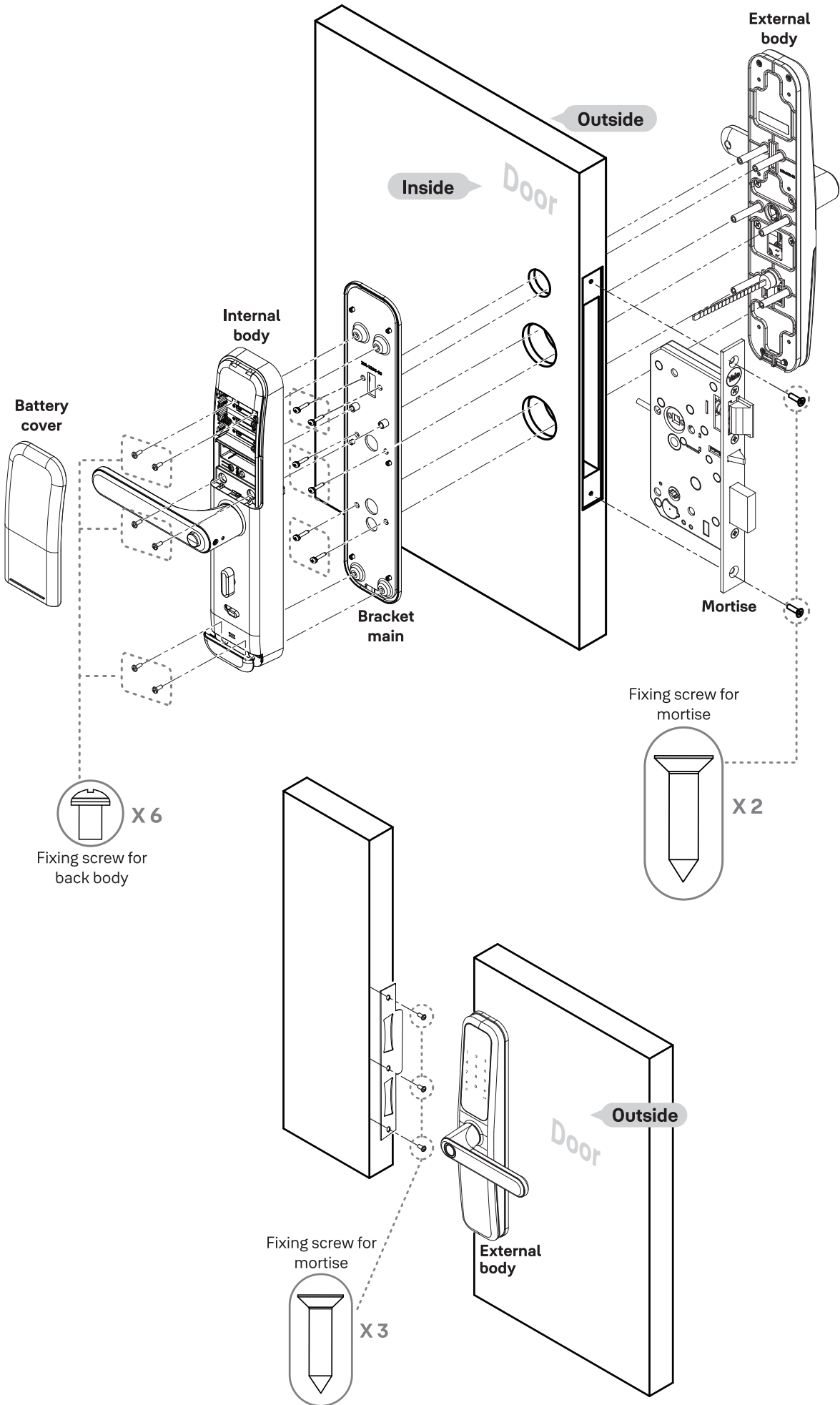


Installation View

Right handed door

* Insert all batteries by checking the \oplus, \ominus connector.



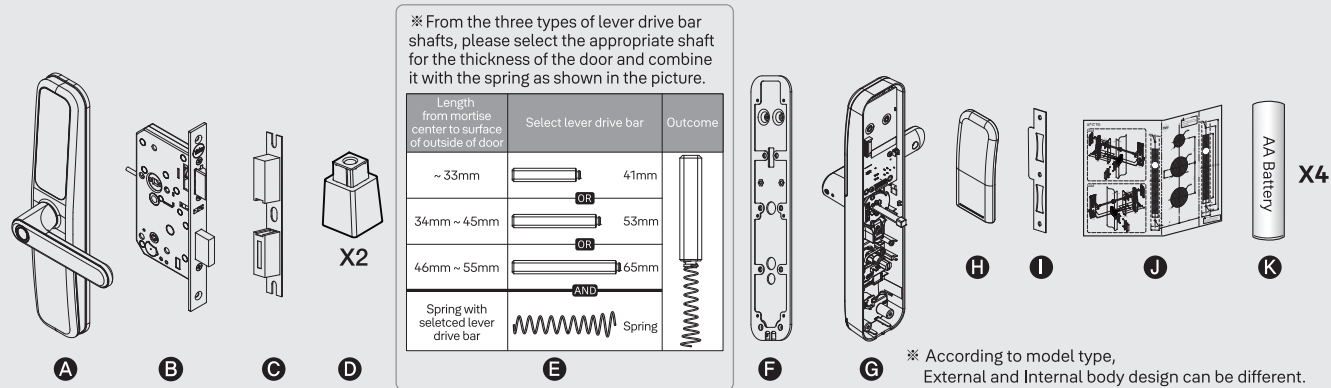
Caution
Depending on your door, some modifications might be required.

Caution
This template is based on 40mm thickness door.

40mm~95mm thickness of the door 60mm backset

Caution
Ⓐ and Ⓑ shaded parts indicate the hole for mortise installation. If necessary, door modification if required accordingly.

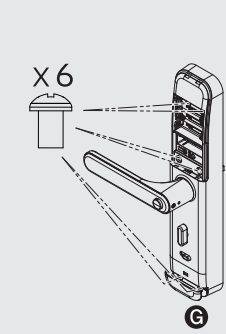
1 Package check



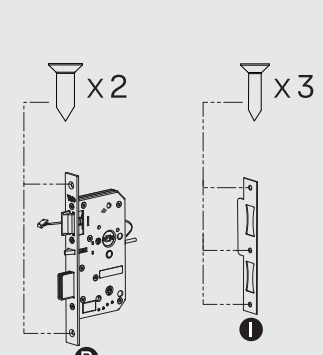
Fixing screw - for bracket main

Door Thickness	Fixing screw	Door Thickness	Fixing screw
40~45mm	X 6	75~85mm	X 6
45~55mm	X 6	85~95mm	X 6
55~65mm	X 6	95~105mm (Not Recommended)	X 6
65~75mm	X 6		

Fixing screws for Internal body



Fixing screws for mortise (2pcs) and strike (3pcs)

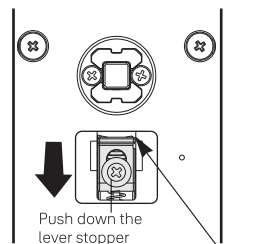


2 Determine door type

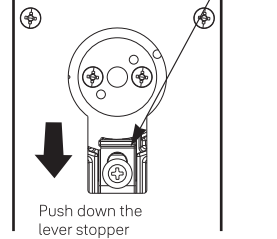
How to change lever direction!

⚠ Make sure to grab lever for safety reason when you change the direction

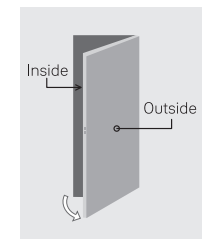
A External body



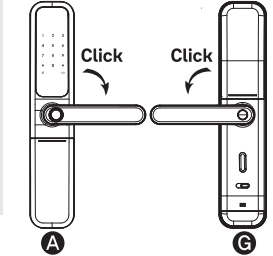
G Internal body



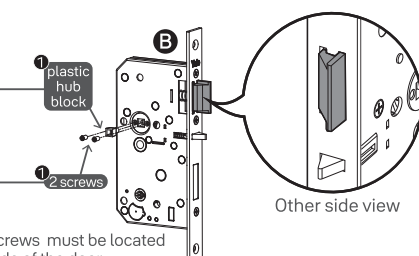
1 Right handed door



■ Determine lever direction

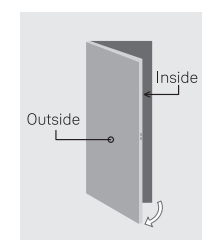


■ Check the mortise latch

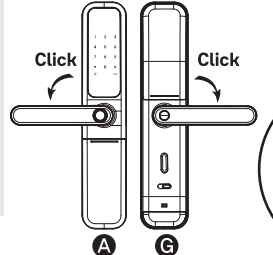


For left handed door.
First, 1 → 2 move the plastic hub.
Second, 1 → 2 move the 2 screws.

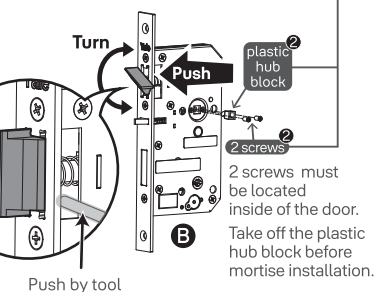
2 Left handed door



■ Determine lever direction

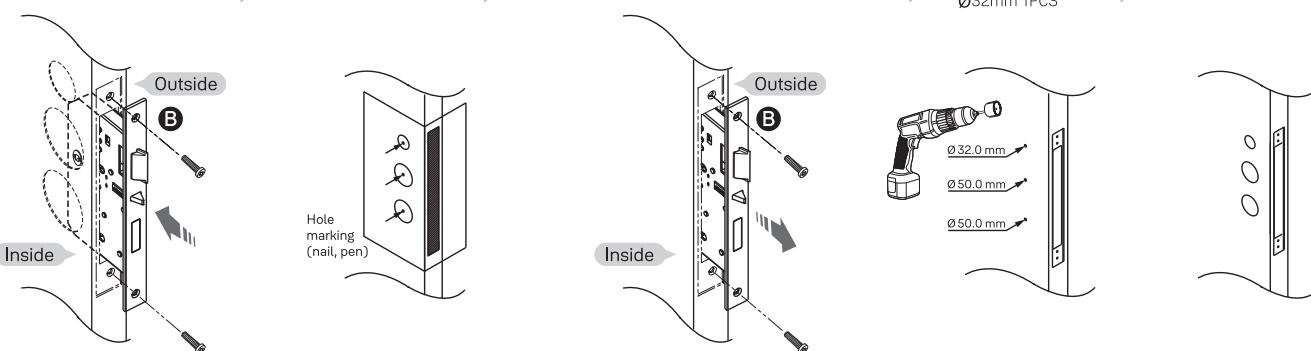


■ How to set the mortise latch



3 Hole cutting

Put mortise into the door → Fold the template and mark the drilling points → Remove the mortise (Remove the mortise when drilling otherwise mortise can be damaged.) → Drilling holes: Ø50mm 2PCS, Ø32mm 1PCS → Check the hole size and position



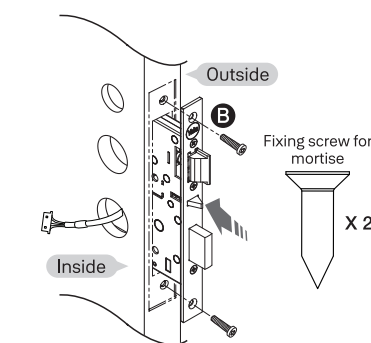
4 Installation

1 Mortise installation

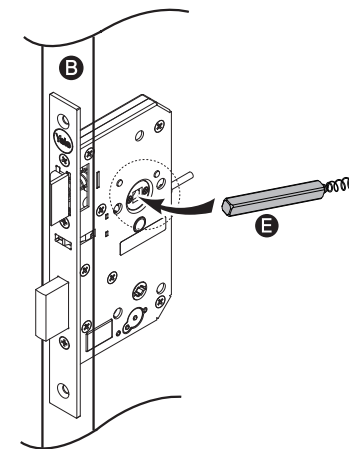
Secure 2 mortise faceplate screws after inserting the mortise.

Caution

- Deadbolt should be retracted.
- Mortise wire should be routed to the inside of the door.



2 Inserting the external lever drive bar

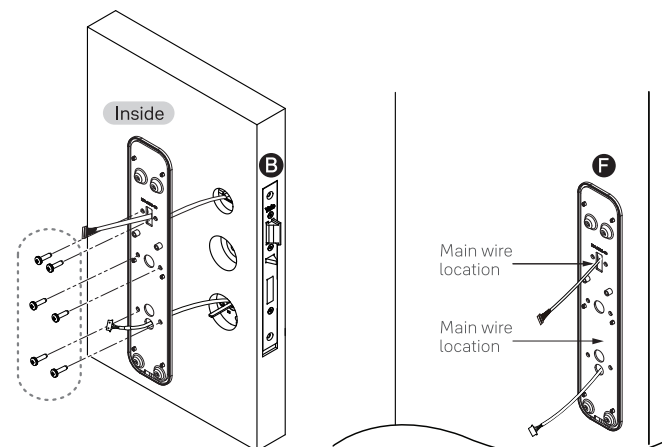


Caution

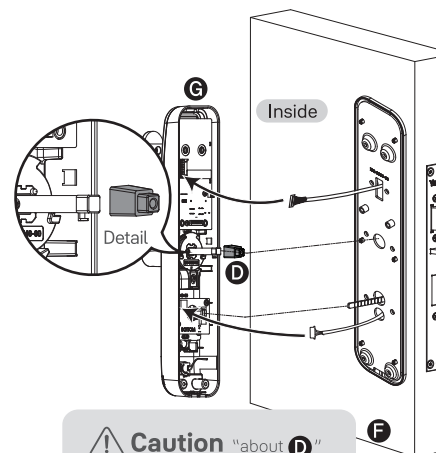
When installing the external body, please insert the external lever drive bar with spring into mortise(lock case) first as picture above.

4 Installing Main bracket

Install and secure using 6 screws through the main bracket into the external body (Wire should be routed through the main bracket.)



6 Cable and Tail bar installation

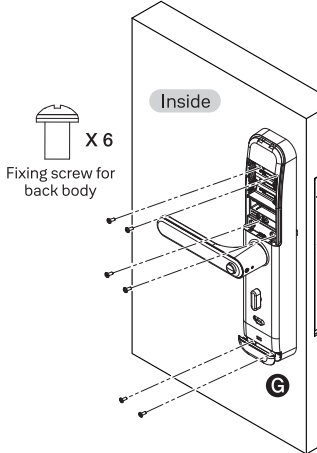


Caution "about D"

Length from mortise center to surface of inside of door.
30~40mm 1ea
40~50mm 2ea

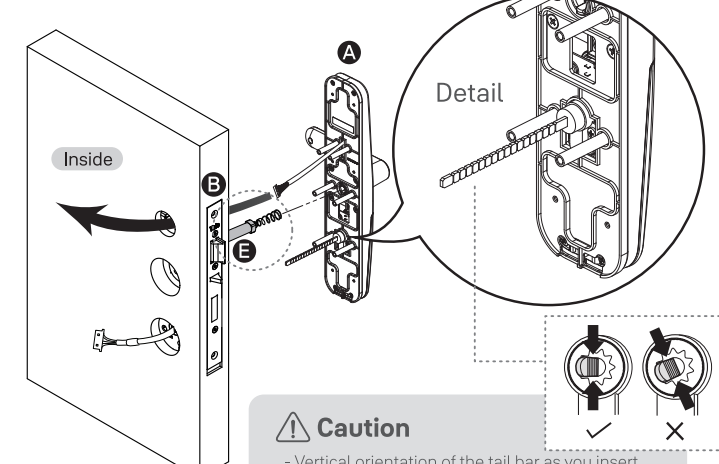
7 Internal body body installation

Install and secure using 4 screws through the Internal body body into the main bracket.



3 External Body Installation

Make sure the position of the lever according to the door and put the external body through the holes.

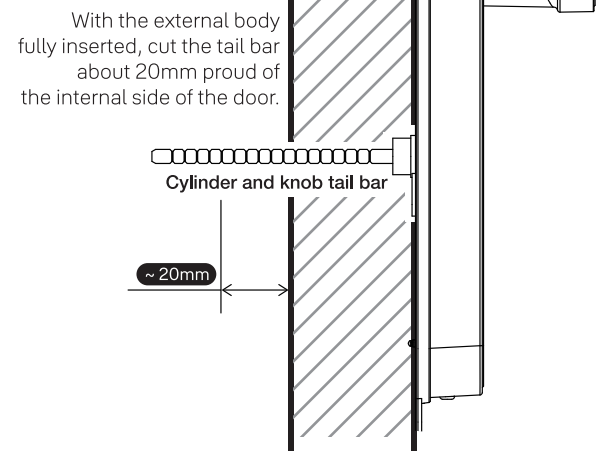


Caution

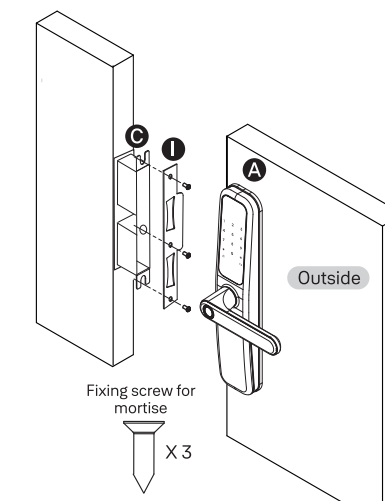
- Vertical orientation of the tail bar as you insert the external body.
- Be cautious when routing the cable.

5 Cylinder Shaft : cutting the Cylinder and knob tail bar

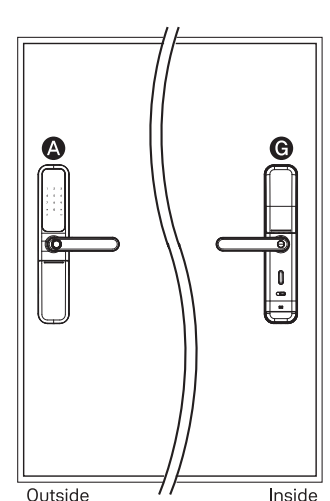
According to the door thickness, cut the cylinder and knob tail bar.



8 Strike installation



9 After installation



Enable Automatic Lock



Release the button to set automatic lock mode on the main-body (after opening the battery cover)

Enable Manual Lock



Press the button to set manual lock mode on the main-body.

Check points for Installer

1. Creating a Advanced PIN Code must be performed upon installation or after resetting the lock to factory default. Programming and use of lock is not possible until this step has been successfully completed.
2. Check opening of the lock after the key registration.
3. Check automatic locking function. After closing the door, it gets auto locked within 5 seconds.
4. Explain setting of Safe handles to user.

Check points for Owner

1. Re-register your Advanced PIN Code.
2. Re-register your own User PIN Code.
3. Read the User Manual before further use.
4. Register your own Keys.
5. Understand the Emergency Power Supply feature.
6. Understand the forced lock mode.